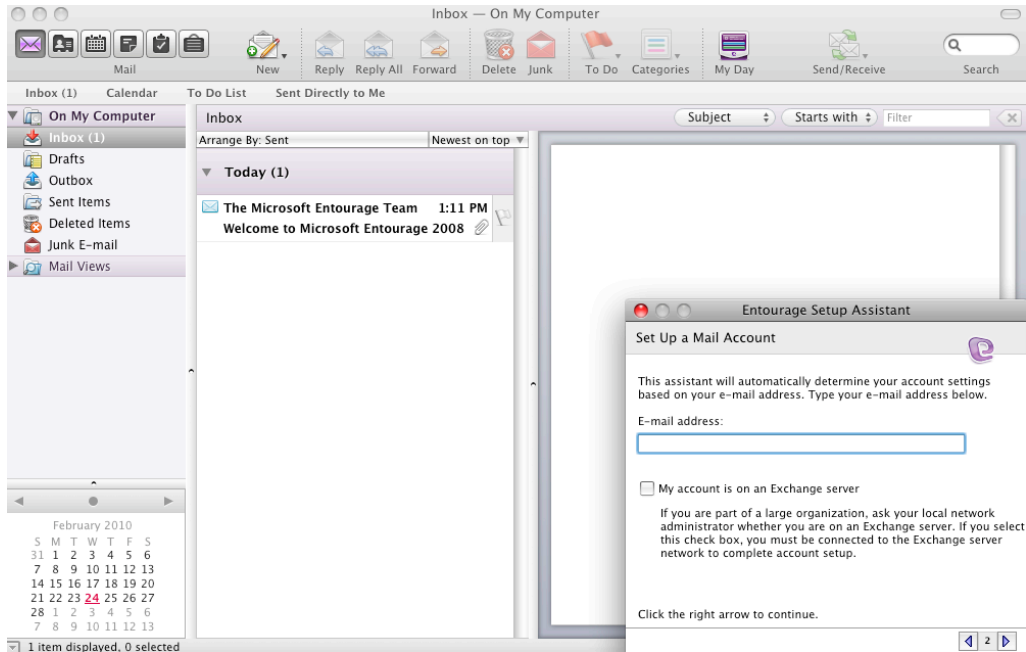
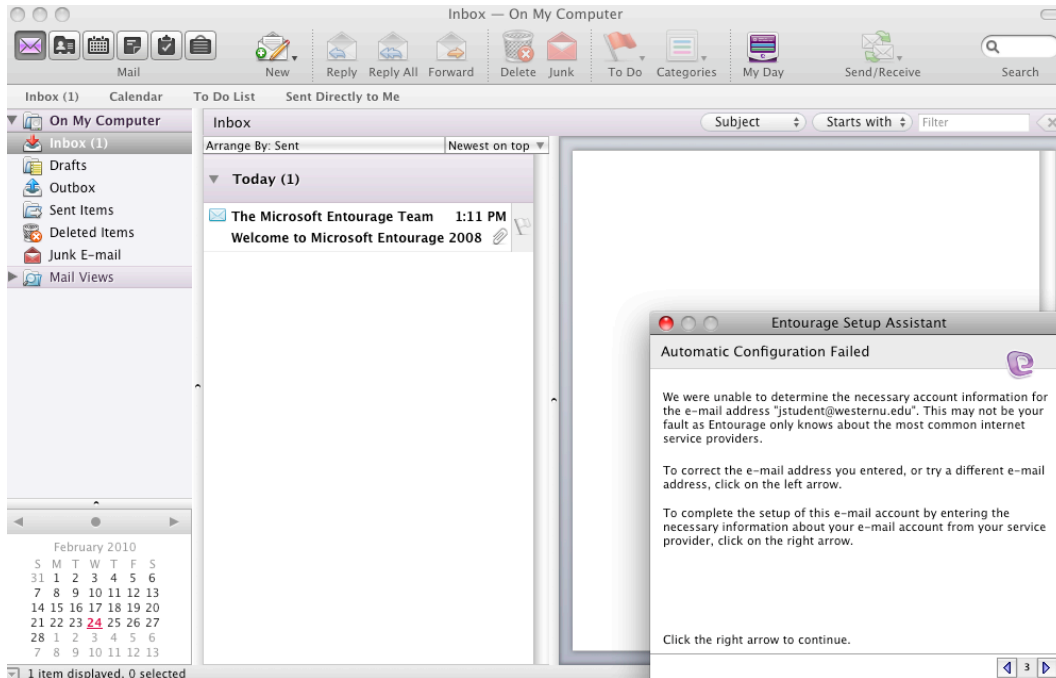


Microsoft Entourage 2008 for Mac Pop setup

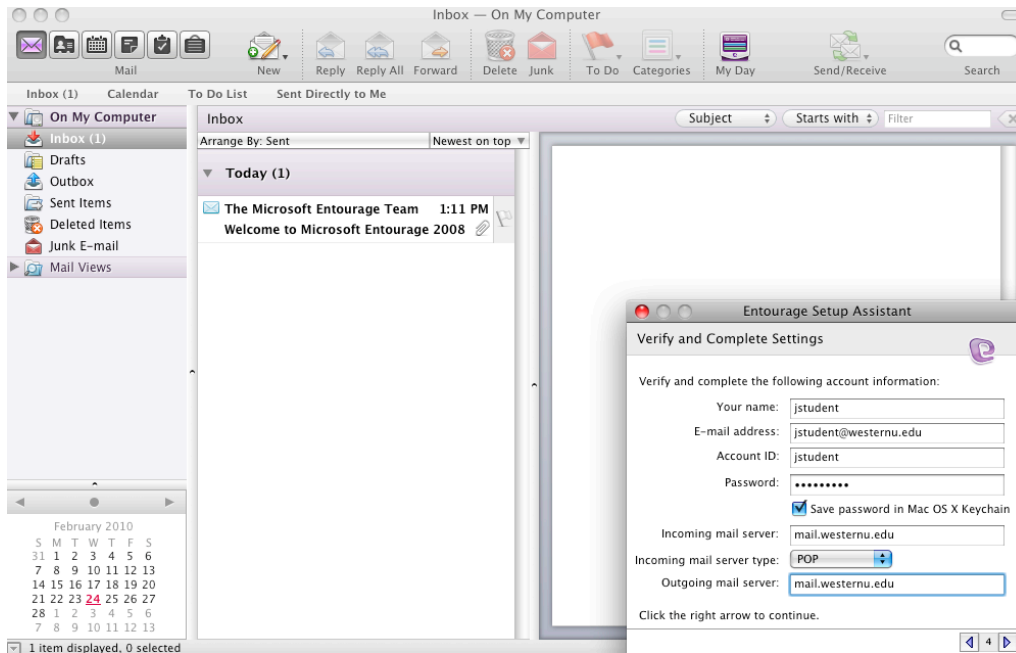
1. Verify that you have Microsoft Office 2008 for Mac installed on your Mac.
2. Once this has been verified, launch Entourage.
3. Enter your e-mail address into the Entourage setup assistant



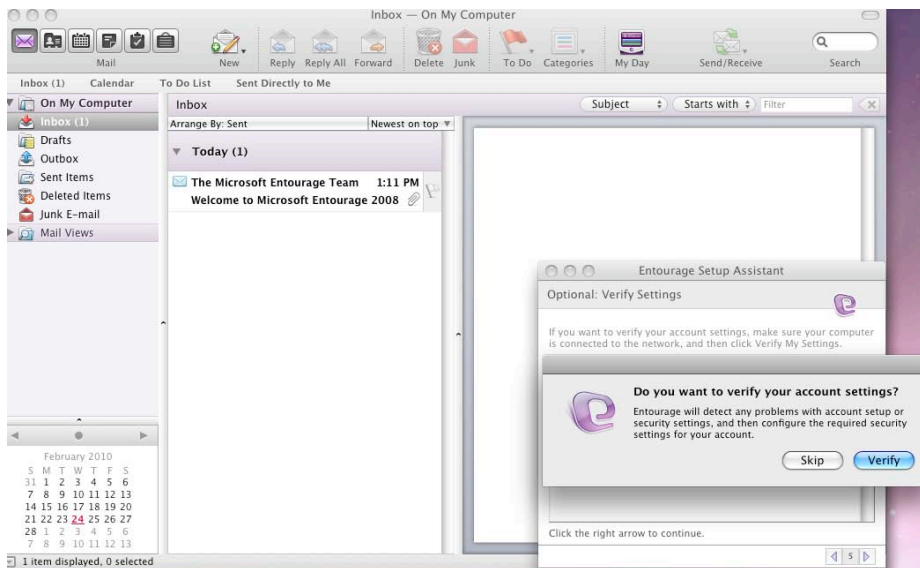
4. You will get a fail message, select the **right arrow** to continue.



5. Copy the settings in the picture below, replacing “jstudent” with your credentials and then select the **right arrow**.



6. Entourage will ask if you would like to verify. Please select “**verify**”



7. Select **“finish”** on the next screen. Your account should now be available through Entourage

