


Division of Institutional
Shared Services

Capital Planning & Construction (CPC)
Construction Project Management

Notice of Construction

HEC CDM Support Lab Renovation

Support Lab Furniture Replacement & Infrastructure Tie-ins

 **Who?** Employee/Staff/Students

 **Construction Timeframe**

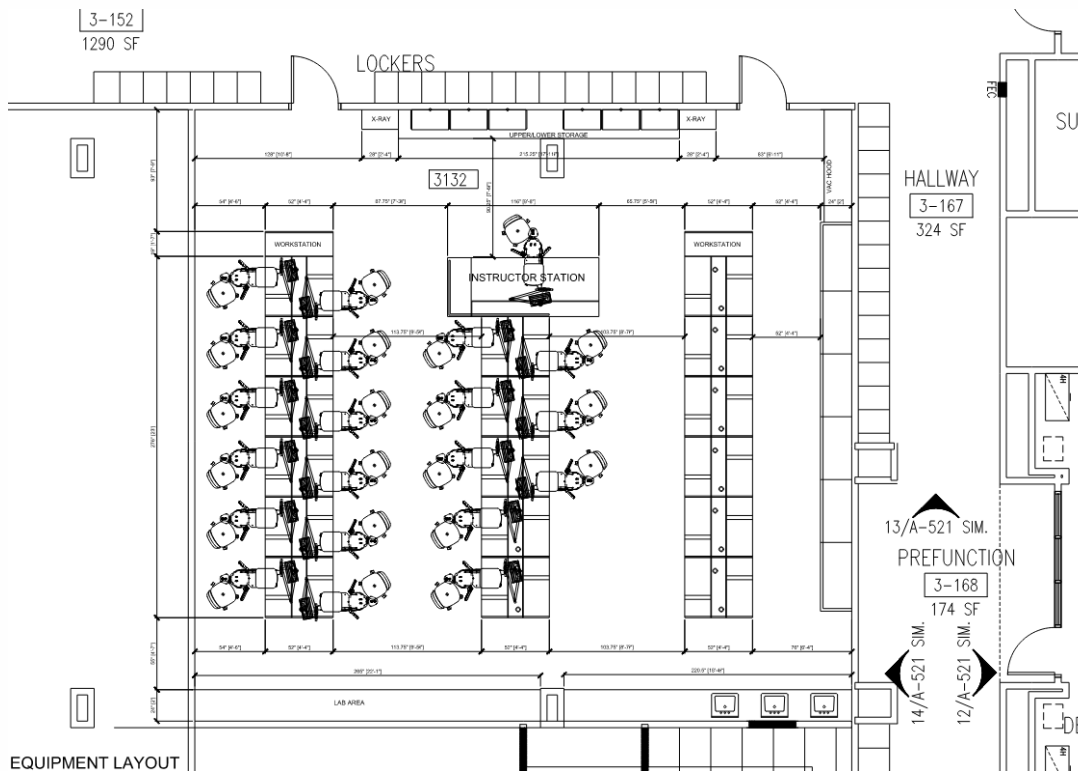
Phase-1 Furniture Removal/Demolition
Monday 12/11/2023 thru Friday 12/15/2023

Phase-2 Infrastructure Rework & Remodel
Monday 12/18/2023 thru 2/9/2024

Capital Planning & Construction will be helping College of Dental Medicine to remove and replace workstations in Support lab 3132 with newly upgraded simulation workstations. Existing connections and tie-ins will be redone to adapt to new furniture systems. Slight renovations for layout direction and door access will be part of the renovation upgrade.

Phase-1 will be the removal of existing systems, equipment, and furniture.

Phase-2 will be the re routing of existing power and data for new furniture systems layout and small space renovations such as doors, plumbing & shelving rearrangements.



HOW THIS AFFECTS UNIVERSITY

Safety First. Demolition and construction debris will be taken down through freight elevator to waste container bin on first floor. Construction traffic will be isolated to red path as shown below. Please exercise caution if needing to pass through this intersection from adjacent hall.

Restricted /Closed Office Spaces

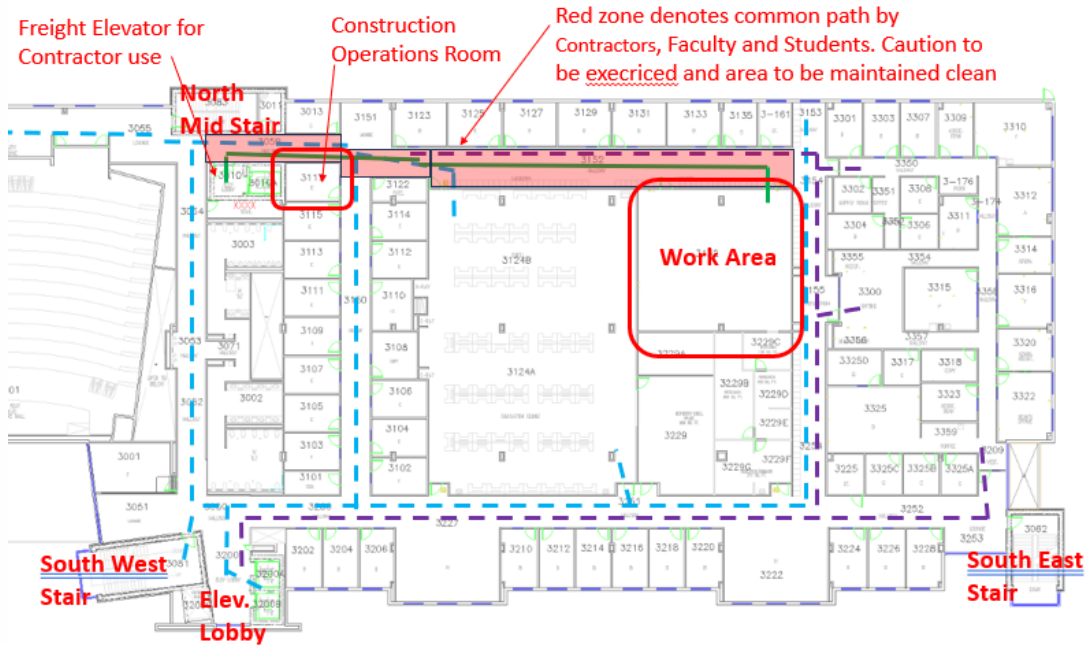
North Offices access will continue to be available, but we request heightened caution to avoid accidental pedestrian collisions with construction crew and equipment. These include offices 3123, 3125, 3127, 3129, 3131, 3133 and 3135

Support Lab access will be completely closed to all non-construction personnel.

Simulation Lab access, is requested to be from south side of building only during construction for improved safety. Please avoid red shaded hallways as shown on below exhibit for improved safety.

1 Study Room, will be reserved for Construction Operations, and will be taped-off for no-access to general population.

Containment plastic wall sheets and protective floor boarding will be deployed to help protect from damage and dusting to adjacent non construction areas.



Second Floor Impacts

Optometry Lens Lab #2124 will have ceiling tiles removed to expose structure above. Relocated AV & Electrical connections to space above will be worked on from this space below. CPC previously notified space leads & coordinated. See image below

Office Space 2132 may have slight impact access needs. CPC has previously notified space leads & coordinated. See image below.

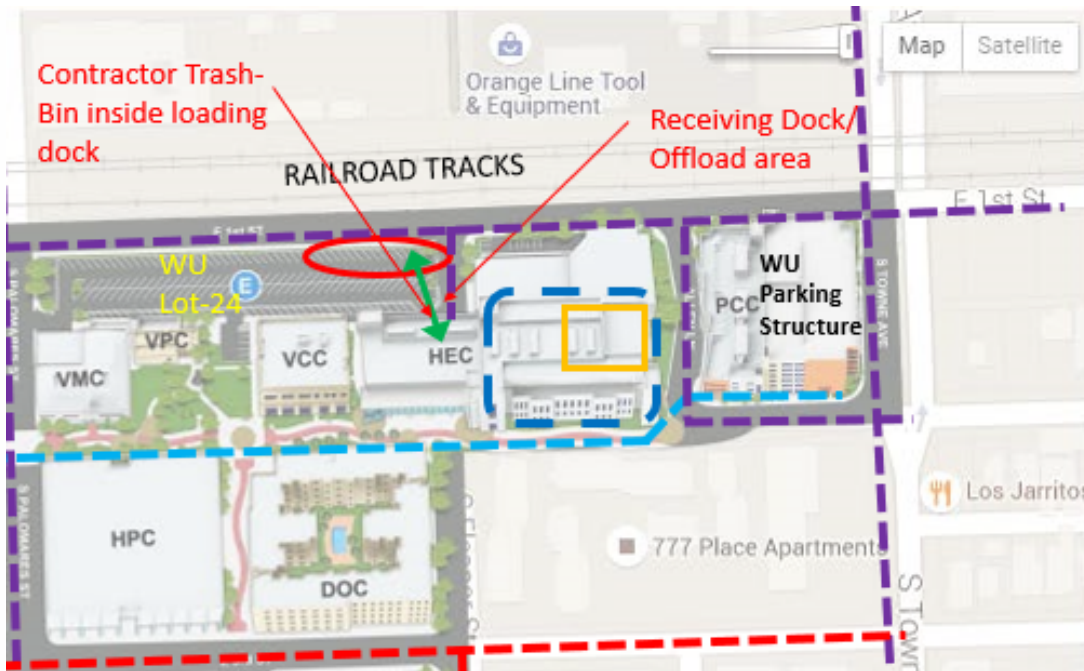


HEC Second Floor Plan

Site Logistics & Impacts

Parking Stalls at HEC lot 24 closest to 1st street will be reallocated for construction vehicles/equipment during this time. Please confirm with Security if you have any questions regarding these spaces. Quantity of 8-10 stalls will be coned-off for Contractor use.

Contractor workflow: Construction hours will be 6am – 2pm. Earlier start time may be allowed to help with surrounding area disturbance mitigation (4am – 8am) for any loud noise or vibrations resulting from construction.




For any other safety concern, please contact WesternU Construction Project Manager immediately as noted below for assistance. For urgent matters please contact Security.

Project collaborators

If you have any specific access or event accommodations for these areas during construction, or for project questions or concerns, please contact Western University's Capital Construction Project Manager via Email as listed below.

For facility related issues, please submit a work order ticket, or contact Security for emergencies.

 Steve Vega, Construction Project Manager

svega@westernu.edu

 Facilities

909-469-5258

facilities@westernu.edu

 Security

909-706-3000

Contact Info

Division of Institutional Shared Services
Capital Planning & Construction
909-469-5473
[Terms](#) | [Privacy](#) | [Feedback](#)