

## What is Visible Body- Human Anatomy Atlas?

- A comprehensive 3D atlas of the human body
- Male and female anatomy
- Includes all body systems
- Encyclopedic definitions
- Disease descriptions
- Pronunciations
- Quizzes

## How do I access the Visible Body- Human Anatomy Atlas App?

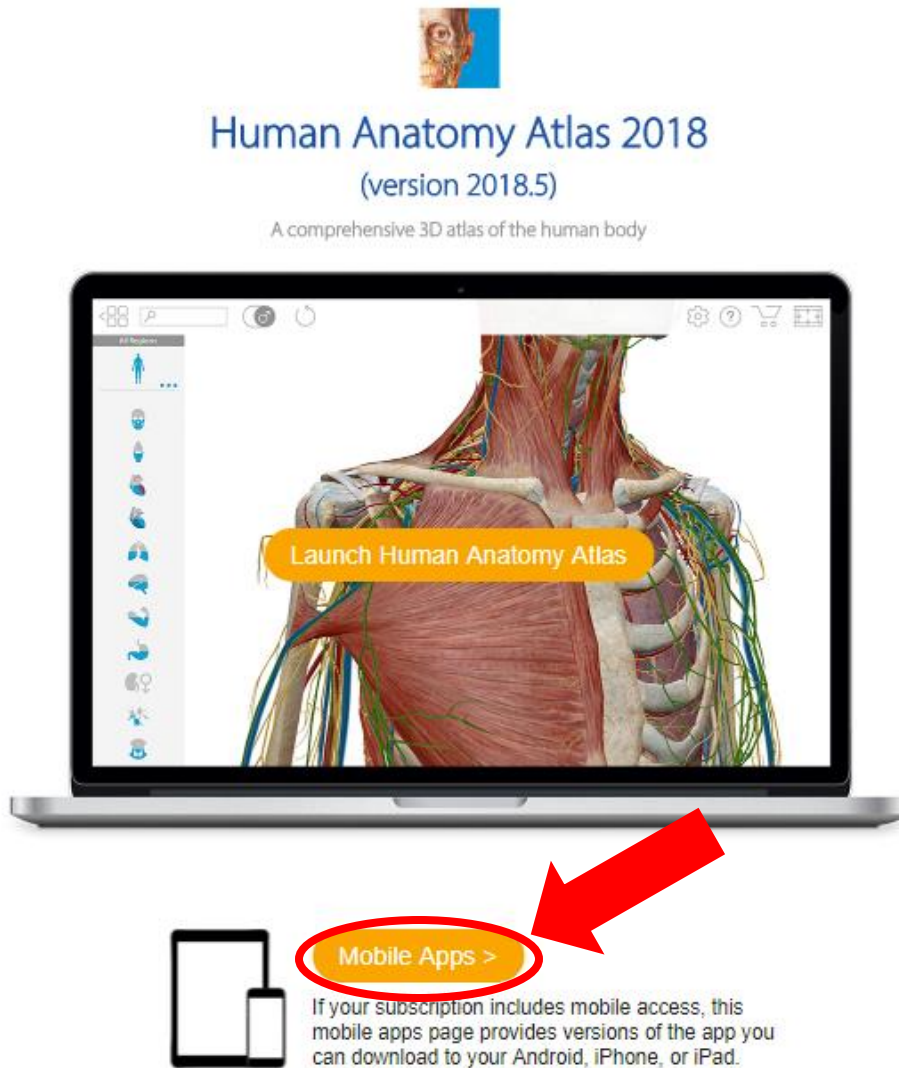
You can download the app from on or off campus. Once downloaded, the app can be used for 150 days. After 150 days, you will have to re-authenticate (see instructions below).

### Initial download instructions:

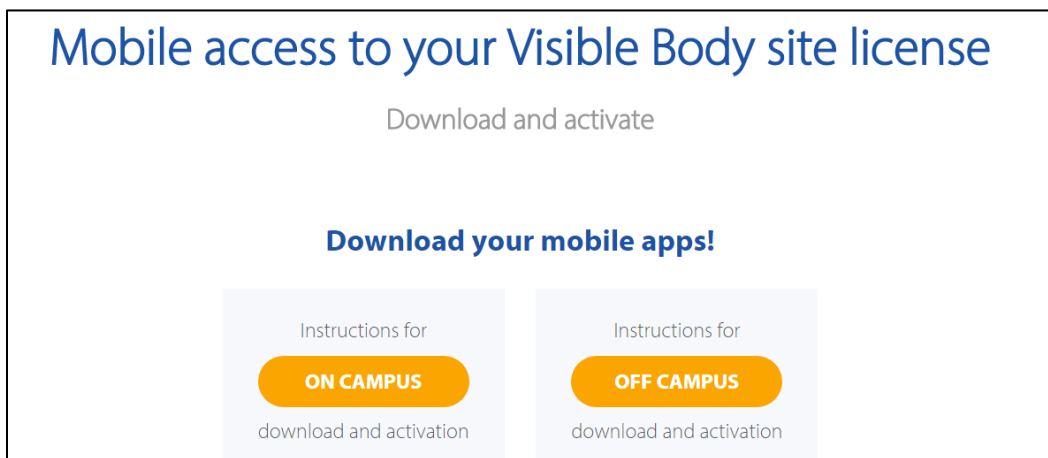
1. From the Visible Body link on the library's E-Resources page (<https://proxy.westernu.edu/login?url=http://ovidsp.ovid.com/ovidweb.cgi?T=JS&NEWS=n&CSC=Y&PAGE=main&D=huaa18>), Click on the Human Anatomy Atlas icon.

The screenshot shows the Visible Body website interface. At the top left is the logo "VISIBLE BODY®". At the top right is the Wolters Kluwer logo with links for "Return to Ovid" and "Log out". Below the logo is a black search bar. The main content area features a large anatomical illustration of a human face with muscles and nerves. To the right of the illustration, the text reads "Anatomy Apps from Visible Body" and "Select a product below to start exploring." Below this text is a row of seven product icons. The second icon from the left, labeled "2018 Visible Body Human Anatomy Atlas", is circled in red with a red arrow pointing to it. The other icons are: "Visible Body Anatomy & Physiology", "Visible Body Anatomy & Function", "Visible Body Muscle Premium", "Visible Body Skeleton Premium", "Visible Body Physiology Animations", and "Visible Body Heart & Circulatory Premium".

2. To access the app, click on the “mobile apps” link.



3. Depending on your location, click on the appropriate link.



**\*When off campus you will be prompted to enter your email address.**

1. A code will be emailed to you
2. Enter the code on the Email Verification Code page

3. A username and password will be visible on-screen and emailed to you with links to the Apple and Google app stores
4. Use the link provided to download the app
5. On the apps activation screen enter the username and password provided

## How do I re-authenticate after 150 days?

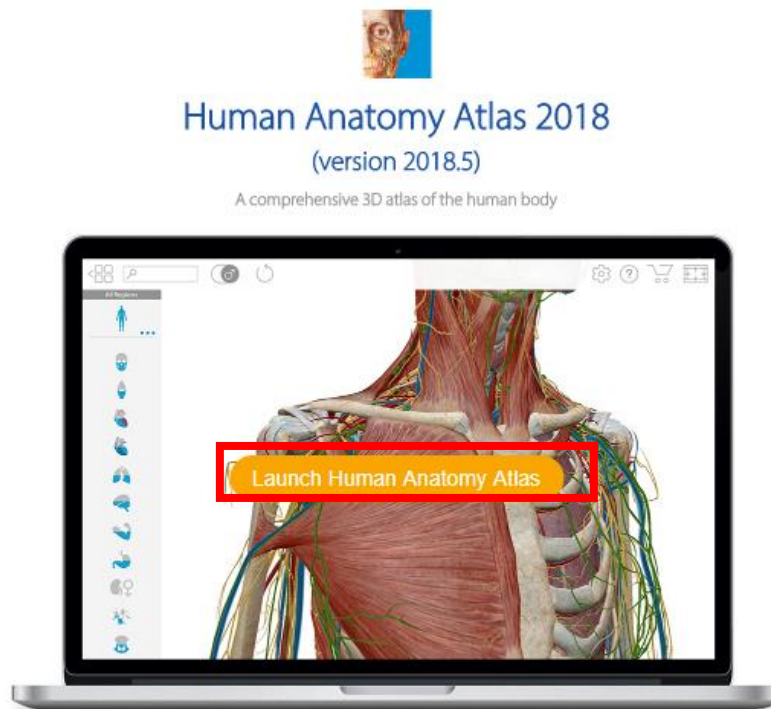
To continue using the app you will have to open the app while on campus (Pomona or Oregon) at least once every 150 days. This will allow you to use the app for another 150 day period.

## How do I access the Visible Body- Human Anatomy Atlas Desktop Version?

You can also use the program on a PC or Mac. It may take a few minutes to load, depending on your browser speed. Follow the first step above to get to the Launch page.

Using Chrome, Firefox, or Safari (**does not work in Internet Explorer**):

Click on “Launch Human Anatomy Atlas”



## What is different on the app versus the desktop?

- Email (app)/ Download image (desktop)
- Augmented reality (only on the app via these devices: IOS- iPhone 6S or better, iPhone SE, iPad Pro or better, or iPad 5<sup>th</sup> generation; Android- see [Supported Devices](#))

## Tips

- Use the History link to undo actions or refresh view
- Use Multi-Select to hide or select more than one structure at a time
- Double click or tap a structure to zoom and center
- Use Views button to access the different views and features

