



Western University  
OF HEALTH SCIENCES



Patient Care Center

WesternU Health

**TRENA RICH,  
Executive Director of University  
Compliance**

# In this presentation, you will learn about...



**Health Services**



**Student Health**



**Health Insurance**



**Health Clearance**



# You Can Access WesternU Health



- **Pharmacy:** Prescription/over the counter medications, compounding services, Anticoagulation services
- **Eye Care Institute:** Comprehensive eye care services and optical services
- **Medical Center:** Pediatric to geriatric care
- **Foot and Ankle Center:** Podiatric services from nails to surgical care
- **Dental Center:** Requires an evaluation to see if you will be accepted as a patient. All services provided by our dental students under direct supervision of licensed dentists.

# Contact & For More Information



**MORE  
INFORMATION**

<http://www.westernuhealth.com>



**WESTERNU  
HEALTH #**

(909) 706-3900, 8am-5pm, M-F

Except weekends & Holidays



**ASSISTANCE**

Lunch 12-1pm, with minimal staff

# Insurance Accepted



**Accept large number of insurance plans,  
including Student Health Insurance Plan (SHIP)**

## **Dental Services**

Services available. You will have to be screened to determine if your dental needs can be met by the Dental Center

## **Eye Care Services**

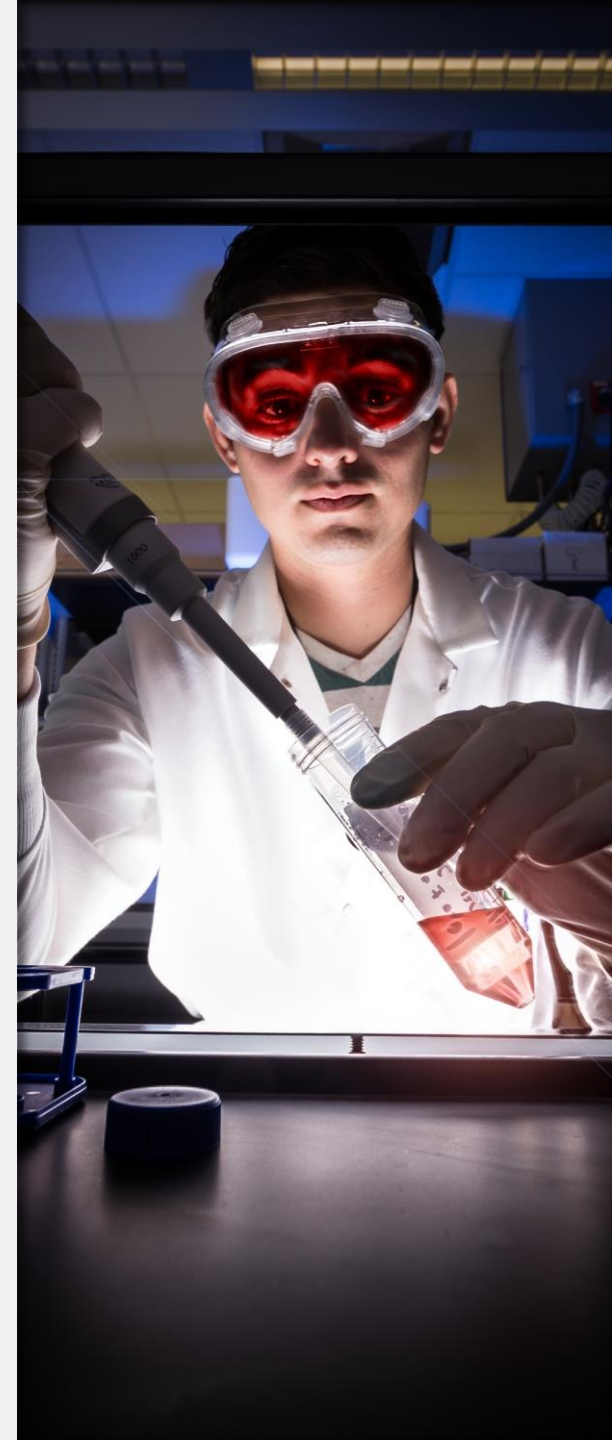
Services covered through Eye Care Network (included in your SHIP policy)

## **Kaiser Insurance**

If your health insurance is Kaiser, you will have to go to a Kaiser facility for healthcare services



<https://www.westernu.edu/registrar/registrar-about/student-health-insurance/>





# Student Health



## **OFFICE**

### **Anderson Tower**

100 W Second Street, room 219  
(Corner Garey Ave & Second St)



## **PHONE**

(909) 706-3830



## **FAX**

(909) 706-3785



## **EMAIL**

[stu-emphealth@westernu.edu](mailto:stu-emphealth@westernu.edu)

# VACCINE REQUIREMENTS

## TB CLEARANCE

- PPD skin test:  
(all students)—do not let this go beyond 1 year or you will have to get 2 separate tests before we can clear you.
- TB Symptoms Checklist must be completed yearly and submitted to student health for all students who have a history of a positive TB skin test or had a chest x-ray or QFN (aka, IGRA) test as part of their TB clearance



# VACCINE REQUIREMENTS

## INFLUENZA VACCINATION

- Per University catalogue, it is a condition of enrollment that you obtain a yearly influenza vaccination
- University deadline is November 30th, but your college may have an earlier one. If your college is earlier, you must follow their requirements.

Medical Contraindication to obtaining the vaccine:

- If there is a true medical contraindication, e.g., immune compromise, autoimmune disease, you must submit a letter from your healthcare provider on their letterhead, signed and dated
- Not liking needles is NOT a medical contraindication



# VACCINE REQUIREMENTS

## HEPATITIS B

- If vaccine series was recently completed, you must obtain a serum blood titer that is quantitative and send results to [Stu-Emphhealth@westernu.edu](mailto:Stu-Emphhealth@westernu.edu) or fax it to 909-706-3785
- Student Health can provide you with the order and requisition to get the titer at PVHMC or Foundation lab here in Pomona (no appointment is necessary at either location)
- Lebanon students can go to Samaritan Hospital and get the lab drawn (there is a standing order in place)

# CLINICAL ROTATIONS FORM



- First come, first served process; takes 10-business days to complete
- We will NOT accept any form that is not completed. You must complete the form with all key information, e.g., your name, DOB, immunization and titer dates/results
- We confirm the information, signed off, dated and stamped
- Once we have signed off on the form(s), it/they will be emailed to your WesternU email, if you have signed the consent form allowing us to email this information to you
- IMPORTANT: If a clinical site requires a more recent physical exam, you must take the form to your healthcare provider, we will not complete/sign off on these types of forms



# Copy of Your Health Records



If you want a hard copy, you can come to the Student Health Office to request it. You must have a photo id and answer a couple of questions for HIPAA compliance before records will be released to you.



If you signed a consent that allows us to email you the information, you can submit an email request and the records will be sent to you, but **ONLY** to your WesternU email address.



We will not send any of your health records to a clinical rotation site. It is your responsibility to do that.



# RESPONSIBILITY

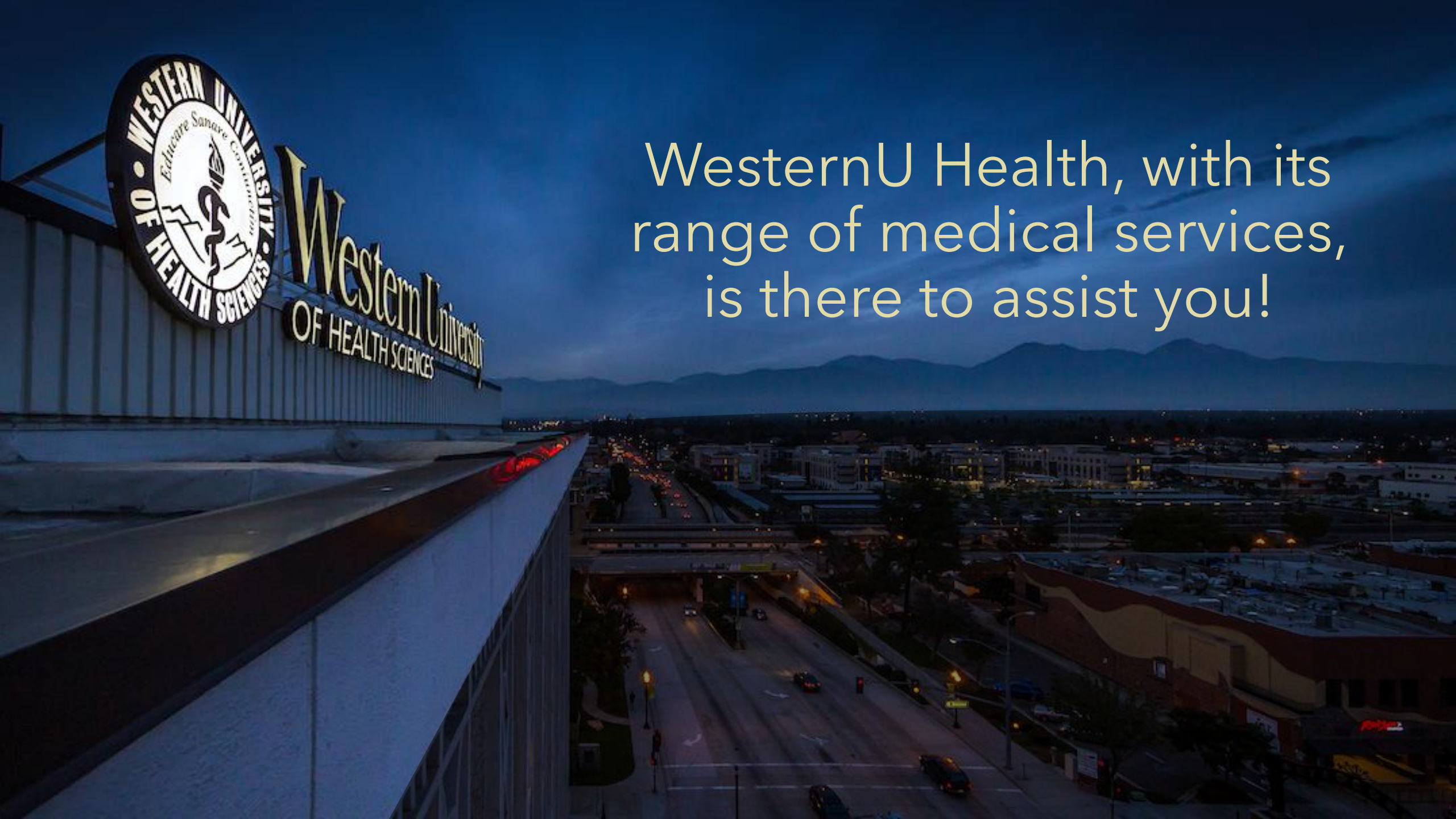
- If you are not current, or don't maintain currency with all health clearance requirements, you will be placed on hold.
- This means you cannot:
  - Register for classes
  - Receive financial aid
  - Obtain copies of your transcripts, or obtain your diploma.
- We will not remove the hold until you provide the necessary documentation



# RESPONSIBILITY

- It is your responsibility to follow through with and complete all health clearance requirements
- The only reminder notices you will receive from Student Health was the one sent to you when you completed your health clearance requirements prior to registration prior to starting classes at WesternU





WesternU Health, with its  
range of medical services,  
is there to assist you!