

Descriptives

IRE Staff

Juan Ramirez, Ph.D.

Director

jramirez@westernu.edu

Neil Patel, Ph.D.

Assessment Analyst

patelnm@westernu.edu

En-Hsien Liu, Ed.D.

Research Analyst

liue@westernu.edu

Delia Padilla Kallemeyn, M. A.

Research Analyst

pkallemeyn@westernu.edu

Carl Todaro, B. S.

Programmer Analyst

ctodaro@westernu.edu

Heather Simmons

Administrative Assistant

hsimmons@westernu.edu

Western University of Health Sciences

Welcome to *Descriptives*...the official IRE newsletter for WesternU!

Welcome to the Office of Institutional Research and Effectiveness. Our department is committed to providing data that supports decision making and planning at Western University of Health Sciences. The information we collect, analyze, and re-

port assists campus assessment and accreditation activities, helps the university meet external reporting requirements, and reinforces the use of data for continuous quality improvement.

Our staff is a talented group of individuals who use their skills to provide information that is timely, relevant, and easy to understand. We hope that you take the time to read our newsletter.

Juan Ramirez, Ph.D.,

Services We Provide

- Annual Surveys
- Special Survey Requests
- Assistance with Program and University Assessment
- Assessment and methodology consultations
- Administering of standardized tests
- External survey data collection
- Dissemination of survey findings to facilitate the improvement of programs
- Promote culture of evidence to demonstrate institutional effectiveness
- Statistical consulting and analysis
- Accreditation assistance

Accreditation Updates

Upcoming Site Visits

1. Accreditation Council for Pharmacy Education: **October 16–October 18, 2012**
2. Council on Podiatric Medical Education: **August 27–30, 2012**
3. AVMA Council on Education: **December 2–8, 2012**
4. Western Association of School and Colleges Special Visit: **March 6–8, 2013**
5. Accreditation Council on Optometric Education: **Spring 2013**
6. Commission on Dental Accreditation: **April 16-18, 2013**

WASC Steering Committee

The WASC Steering Committee guides the preparation and execution of the WASC special site visit.

- Juan Ramirez (Chair)
- Neil Patel
- Christine Magladry
- Beatrice Saviola
- Tina Meyer
- Katherine Jimenez
- Denise Cornish
- Laura Rivas
- Elizabeth Rega
- Geri Abracosa
- Jodi Olson
- Roy Guizado

WesternU Statistics 2011-12

Current Students	3,293
Alumni	9,441
Females	64%
Male	36%
Average Age	28
Degrees awarded in 2012	749

Qualtrics

Did you know that WesternU purchased a license for survey software that all WesternU students and employees can use? Contact IRE for more details. In the meantime, take a look at our pending policy on institutional surveys [here](#).

Who we are...

Juan Ramirez; Director: Dr. Ramirez holds a doctorate degree in social psychology from Claremont Graduate University with an emphasis in research methods and statistics. He has been the director of IRE for over 3 years. He is involved in internal and external reporting, regional accreditation, assessment, and many other projects related to institutional effectiveness.

Delia Padilla Kallemeyn; Research Analyst: Delia earned her bachelor's degree in psychology and sociology at UC Riverside. She also has a Master's degree in psychology with an emphasis in research methods and statistics from Cal State, Los Angeles. She has been at WesternU since 2008 and her main responsibilities include special survey requests, supporting accreditation activities and the Health Career Ladder programs.

Neil Patel; Assessment Analyst: Dr. Patel earned his bachelor's degree at UCLA, his master's and PhD at Claremont Graduate University. He is a social psychologist who is specialized in the social sciences, research methodology, program assessment, and institutional research. In addition, Dr. Patel assists faculty in various Western University colleges with research statistics and journal publications.

Carl Todaro; Programmer Analyst: Carl holds a bachelor of science in computer science from Michigan State University. He has over 16 years of experience gathering requirements, designing, coding, and implementing custom software solutions. He supports IRE activities by developing queries and reports to extract data from Banner and the Operational Data Store. He also designs and maintains websites, dashboards, and collaborative environments such as SharePoint.

En-Hsien Liu; Research Analyst: Dr. Liu has a doctorate in education from the University of Southern California. She has worked in the Office of Institutional Research & Effectiveness since 2006. She is primarily responsible for survey creation, reports, and the organization and analysis of the annual Critical Thinking and DIT-2 standardized testing for the colleges.

Heather Simmons; Administrative Assistant & Data Technician: Heather has been with the WesternU family for eight years and keeps our office organized by supporting the department with assessment and accreditation activities. When she is not chasing after her three year old son, she is an avid screenwriting student.

Western Association of Schools and Colleges (WASC)-ARC 2012 Conference

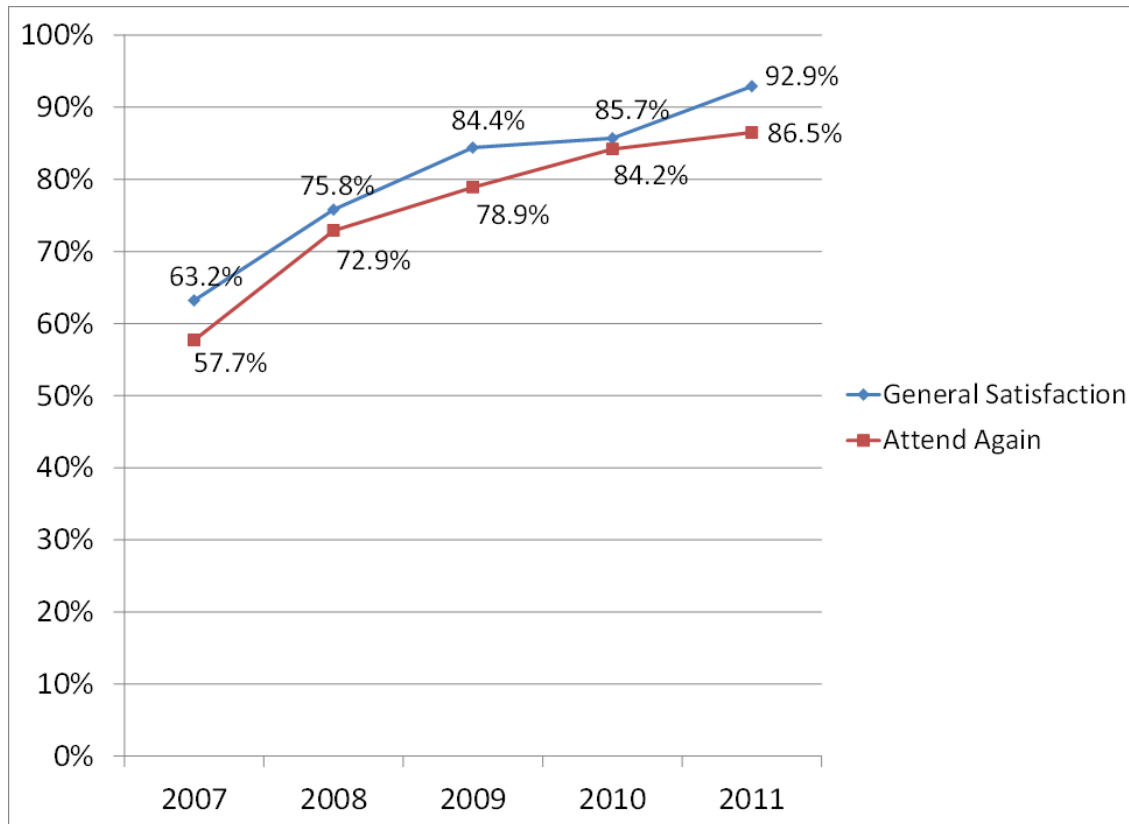
In April, the IRE team attended the 2012 WASC-Academic Resource Conference in Costa Mesa, California. The theme of the conference questioned the direction of higher education amidst economic, political, and social challenges. The IRE department had two separate presentations at the conference. The first was a collaborative talk by Juan

Ramirez (Western University), Jeannette Baez (Claremont Graduate University), and Meiling Tang (Touro). The assessment leaders from three graduate-only institutions shared their strategies for engaging their campus to assess effectiveness of student affairs which can have an impact on student satisfaction and retention.

The second presentation was led by Neil Patel. The poster presentation data was gathered via focus groups on WesternU student study habits. Students like to study with peer groups and they would like less class time to have more study time. For more information please contact Dr. Ramirez or Dr. Patel.

Student satisfaction on the rise—results from First Year Student Survey 2012!

Figure 1. Five year percent agreement for general satisfaction on first year survey.



Stats Corner—Test your knowledge! Answers in column to right.

1. What is the mean of the following sequence...2, 2, 3, 5, 7, 8?

- A. 2
- B. 4.5
- C. 5.1

2. What is the mode of the following sequence...1, 2, 4, 4, 5, 5, 6, 7, 7, 7?

- A. 5
- B. 5.5
- C. 7

3. What is the median of the following sequence...1, 2, 4, 5?

- A. 3
- B. 1
- C. 5

4. What is the most commonly used statistical measure of spread in a normally distributed population?

- A. t-test
- B. Z-score
- C. Standard deviation

5. If you graph a normally distributed set of data (without outliers) what will the shape of that graph be?

- A. Flat
- B. Bell shaped
- C. J-curve

6. Which one of the following terms does not belong?

- A. Critical Thinking
- B. Humanism
- C. Social Justice

Western University of Health Sciences

Descriptives is a publication of The Office of Institutional Research and Effectiveness at Western University of Health Sciences, Pomona, CA.

Editor

Delia Padilla Kallemeyn, Research Analyst

Contributors

Juan Ramirez, Director
 Neil Patel, Assessment Analyst
 En-Hsien Liu, Research Analyst
 Carl Todaro, Programmer Analyst
 Heather Simmons, Administrative Assistant

For more information, go to:

<http://www.westernu.edu/oir-welcome>

Answers: B, C, A, C, B, C, 4.