

8

CFI - Old Subway Building Renovation

Major Capital Project



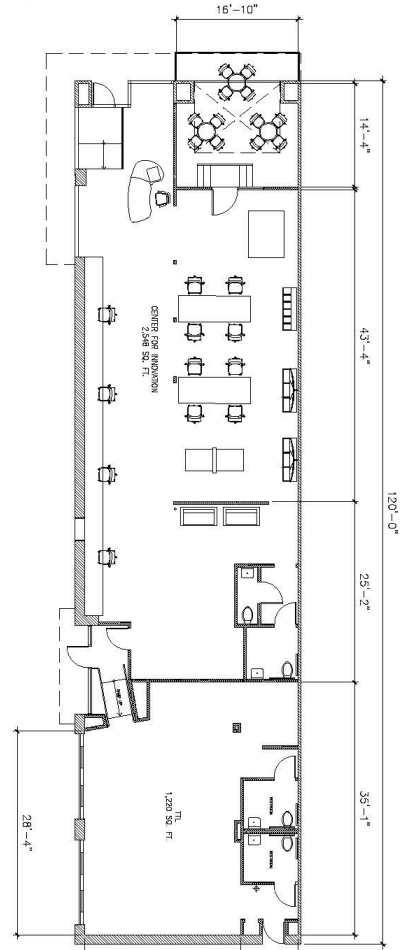
Western University
OF HEALTH SCIENCES

ACTIVE PROJECT

This project will renovate the old Subway building to accommodate the expansion of the institution's Innovation initiative.

Summary:

- Renovates 2,548 sq. ft. of the former Subway space
- Project Start Date: July 19
- Anticipated Construction Start Date: TBD
- Anticipated Project Completion Date: TBD



Project Status:



**Construction on hold unless donor/ funding can be identified

Funding Status:



Project Partially Funded



Total Project Cost: \$475,000

Total Approved: \$75,000

Former Subway (CFI) Project Cost Sheet

Estimate	Budget	Actual spent to date	#DIV/0!
\$475,000	\$0	\$0	#DIV/0!

Construction Costs

Items	Estimate	Budget	Actual Spent	Notes
General Contractor T.I.	\$ 400,000.00			
HVAC	TBD			
Roof	TBD			
Fire Sprinklers	N/A			
Architectural Fee	\$ 75,000.00			
Insurance	TBD			
Demo	TBD			
Total	\$ 475,000.00	\$ -	\$ -	

Owner Direct Costs

Items	Estimate	Budget	Actual Spent	Notes
Door hardware and keying	TBD			
Card Key Access	TBD			
Miscellaneous Directs	TBD			
Physical Plant Support	TBD			
Electric high voltage connection	N/A			
Telephone connection	TBD			
Alarms	TBD			
Security alarm	N/A			Included in card key access
Total	\$ -	\$ -	\$ -	

Other Costs

Items	Estimate	Budget	Actual Spent	Notes
A&E Fees	TBD			
Structural Engineer	TBD			
Civil Engineer	TBD			
Project Managment	TBD			
A&E Reimbursables	TBD			
Hazardous Materials testing/monitoring	TBD			
Testing and special inspections	N/A			
Geotechnical	N/A			
Commissioning	N/A			
Plan Check/Permits/Fees	TBD			
Miscellaneous Indirects	TBD			
Moving Allowance	N/A			
Printing and reproductions Bid/Constructio	TBD			
Total	\$ -	\$ -	\$ -	

FF&E

Items	Estimate	Budget	Actual Spent	Notes
Custodial	TBD			
Furniture	TBD			
Appliances/hoods/lab equipment	TBD			
Data equipment/racks/install	TBD			
interior signage	TBD			
exterior signage	TBD			
Audio visual	TBD			
Total	\$ -	\$ -	\$ -	

Notes:
WAG - Wild guess
ROM - Rough order of magnitude
CE - Contractor estimate
BID - Quote